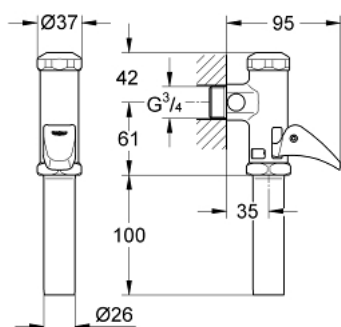


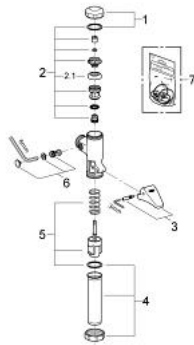
37 402 000 **START DAL-AUTOMATIC FLUSH VALVE FOR WC**

PRODUCT DESCRIPTION

- exposed installation
- (¾")
- flow pressure range from 1.2 - 5.0 bar
- for wash-down and wash-out bowls
- with flow rate adjustment
- material: brass
- GROHE Long-Life finish



37 402 000 **START DAL-AUTOMATIC FLUSH VALVE FOR WC**



SPARE PARTS

- 1: Cover (Spare part-nr. 43103000)
 - 2: Piston (Spare part-nr. 43448000)
 - 2.1: Sleeve (Spare part-nr. 4376500M)
 - 3: Lever (Spare part-nr. 43056000)
 - 4: Discharge Sleeve (Spare part-nr. 43316000)
 - 5: Sleeve (Spare part-nr. 42923000)
 - 6: Throttle (Spare part-nr. 43388000)
 - 7: Set of seals (Spare part-nr. 43706000)*
- * Optional accessories