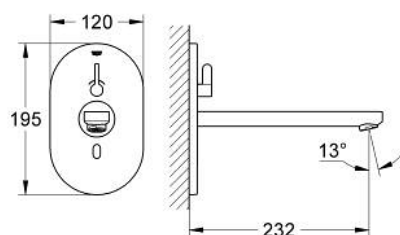
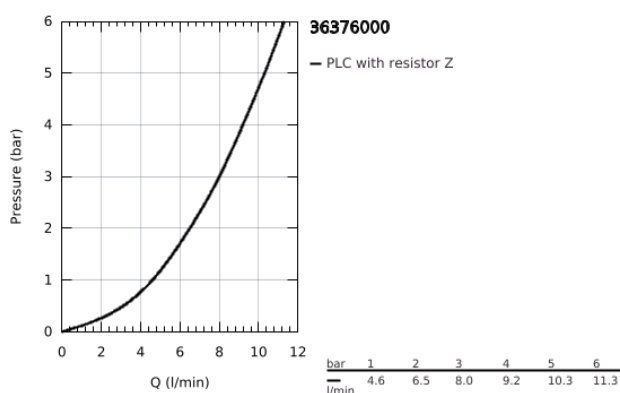


36 376 000 EUROSMART COSMOPOLITAN E INFRA-RED ELECTRONIC BASIN MIXER WITH MIXING DEVICE AND ADJUSTABLE TEMPERATURE LIMITER

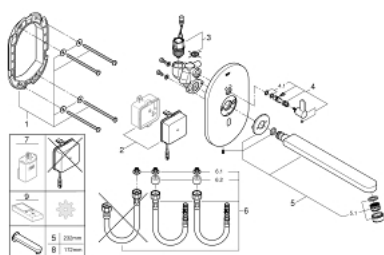


PRODUCT DESCRIPTION

- with infrared sensor for bi-directional communication for monitoring, configuration and service purpose
- with transformer 100-230 V AC, 50-60 Hz, 6 V DC
- GROHE Long-Life finish
- maximum flow rate (at 3 bar): 8 l/min
- laminar flow straightener
- chrome escutcheon
- chrome spout
- projection 232 mm
- 7 pre-set programs:
 - auto flush
 - thermal disinfection
 - cleaning mode
- additional functions and precise settings by remote control 36 407
- set for final installation for concealed fitting box
- 36 339 001
- CE approved



36 376 000 EUROSMART COSMOPOLITAN E INFRA-RED ELECTRONIC BASIN MIXER WITH MIXING DEVICE AND ADJUSTABLE TEMPERATURE LIMITER



SPARE PARTS

- 1: Mounting frame (Spare part-nr. 42419000)
- 2: Switching power supply (Spare part-nr. 42470000)
- 3: Solenoid valve (Spare part-nr. 42469000)
- 4: Mixing lever (Spare part-nr. 42441000)
- 4.1: Sealing washer (Spare part-nr. 4284000M)
- 5: Outlet (Spare part-nr. 42418000)
- 5.1: Flow straightener (Spare part-nr. 13960000)
- 6: Connection hose set (Spare part-nr. 42417000)
- 6.1: Filter (Spare part-nr. 4241300M)
- 6.2: Non-return valve (Spare part-nr. 4240400M)
- 7: Battery housing with battery (Spare part-nr. 42393000)*
- 8: Outlet (Spare part-nr. 42420000)*
- 9: Remote control (Spare part-nr. 36407001)*

* Optional accessories