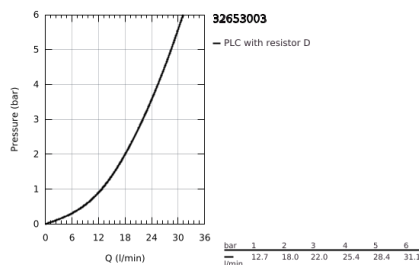
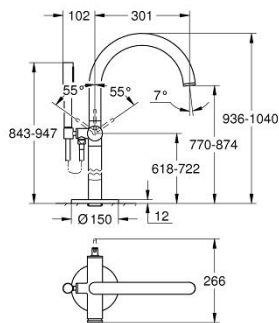
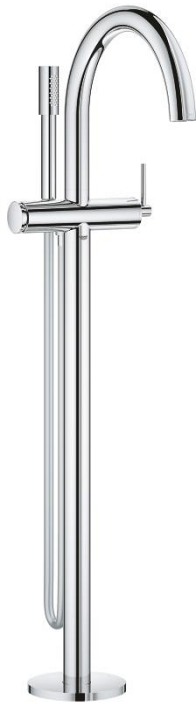


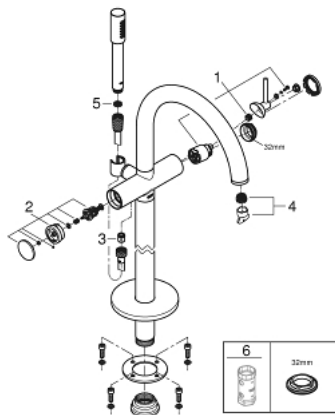
32 653 003 ATRIO SINGLE-LEVER BATH MIXER FLOOR MOUNTED

PRODUCT DESCRIPTION

- final installation for
- 29 086 / 45 984
- without roughing-in-set
- GROHE SilkMove 35 mm ceramic cartridge
- with temperature limiter
- GROHE Long-Life finish
- automatic diverter: bath/shower
- spout with mousseur
- projection 301 mm
- integrated non-return valve in shower outlet
- with shower holder
- hand shower Rainshower Aqua Stick (26 465)
- Silverflex shower hose 1250 mm
- protected against backflow



32 653 003 ATRIO SINGLE-LEVER BATH MIXER FLOOR MOUNTED



SPARE PARTS

- 1: Cartridge (Spare part-nr. 46374000)
 - 2: Diverter (Spare part-nr. 48405000)
 - 3: Non-return valve (Spare part-nr. 08565000)
 - 4: Mousseur (Spare part-nr. 13926000)
 - 5: Dirt strainer (Spare part-nr. 0700200M)
 - 6: Socket Spanner (Spare part-nr. 19332000)*
- * Optional accessories