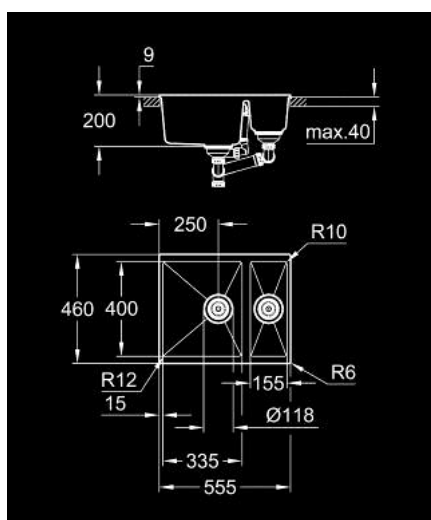


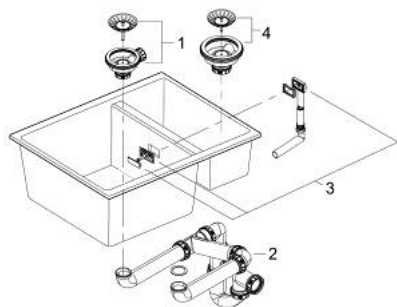
31 648 AT0 K500 COMPOSITE SINK



PRODUCT DESCRIPTION

- model: K500 60-C 55.5/46 1.5 rev
- mounting type: top mount or undermount
- material: quartz composite
- GROHE Whisper
- min. cabinet size: 600 mm
- dimensions: 555 x 460 mm
- 1 bowl: 335 x 400 x 200 mm
- 0.5 bowl: 155 x 400 x 140 mm
- outer radius: R6, inner bowl radius: big bowl R12, small bowl R10
- GROHE FastFixation installation system
- sink mountable left or right
- cut-out (top mount): 545 x 444 mm
- cut-out (undermount): 525 x 400 mm
- drainer: Ø 3.5" basket strainer waste
- accessories included: waste kit, basket strainer waste, mounting set
- mounting with silicone (top mount)
- optional push to open excenter (40 986 SD0)
- amount of fasteners included (undermount): 8
- heat resistant up to 180° C

31 648 AT0 **K500 COMPOSITE SINK**



SPARE PARTS

- 1: Plug (Spare part-nr. 42588SD1)
- 2: Siphon (Spare part-nr. 42618000)
- 3: Cover element (Spare part-nr. 42590SD1)
- 4: Plug (Spare part-nr. 42589SD1)