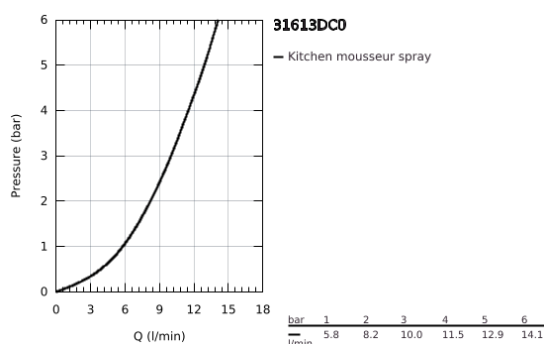


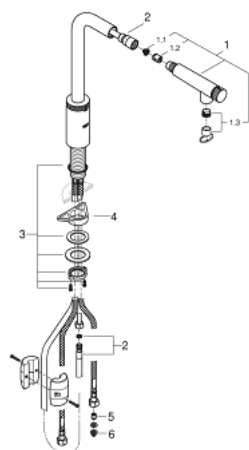
31 613 DC0 MINTA SMARTCONTROL SINK MIXER WITH SMARTCONTROL



PRODUCT DESCRIPTION

- single hole installation
- GROHE Long-Life finish
- pull-out spray with laminar
- metal spray
- GROHE Magnetic Docking guarantees easy retraction and smooth docking
- GROHE SmartControl push for ON-OFF, turn for volume adjustment from water saving eco mode to Full Flow
- temperature adjustment by turning of mixing valve on body
- swivel tubular spout
- swivel area 140°
- protected against backflow
- flexible connection hoses
- metal fixation set
- Lead and Nickel Free Inner Water Ways
- maximum flow rate (at 3 bar): 10 l/min

31 613 DC0 MINTA SMARTCONTROL SINK MIXER WITH SMARTCONTROL



SPARE PARTS

- 1: Hand shower (Spare part-nr. 48487DC0)
- 1.1: Dirt strainer (Spare part-nr. 0676800M)
- 1.2: Non-return valve (Spare part-nr. 08565000)
- 1.3: Flow control set (Spare part-nr. 48470000)
- 2: Shower hose (Spare part-nr. 48488000)
- 3: Shank fastening assembly (Spare part-nr. 48384000)
- 4: Support plate (Spare part-nr. 05334000)
- 5: Non-return valve (Spare part-nr. 45881000)
- 6: Dirt strainer (Spare part-nr. 0676800M)