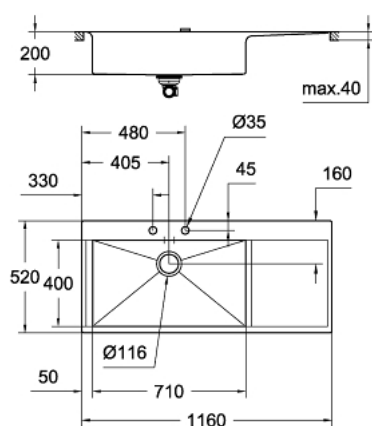


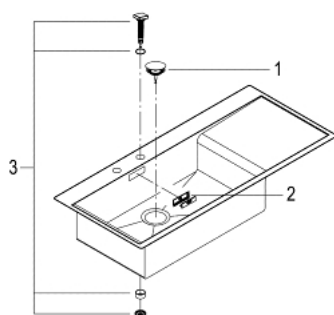
31 581 SD0 **K1000 STAINLESS STEEL SINK WITH DRAINER**



PRODUCT DESCRIPTION

- model: K1000 80-S 116/52 1.0 lh
- mounting type: flush mount
- material: stainless steel AISI 304 (V2A)
- material thickness: 1 mm
- GROHE Long-Life finish
- finish: satin finish
- GROHE Whisper
- min. cabinet size: 800 mm
- dimensions: 1160 x 520 mm
- 1 bowl: 710 x 400 mm
- GROHE FastFixation installation system
- sink mountable left
- cut-out: 1148 x 508 mm
- drainer: automatic waste fitting
- accessories included: automatic waste fitting with rotary handle, waste kit, basket strainer waste, mounting set
- amount of fasteners included (flush mount): 18
- outer radius: R10, inner bowl radius: R0/R30

31 581 SD0 **K1000 STAINLESS STEEL SINK WITH DRAINER**



SPARE PARTS

- 1: Plug (Spare part-nr. 42577SD0)
- 2: Cover element (Spare part-nr. 42578SD0)
- 3: Turning handle (Spare part-nr. 42574SD0)
- 4: Plug (Spare part-nr. 42576SD0)