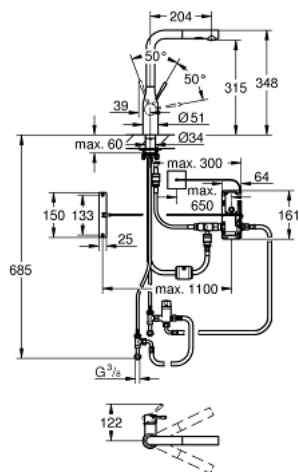


## 30 311 000 ESSENCE FOOT CONTROL ELECTRONIC SINGLE-LEVER SINK MIXER 1/2"

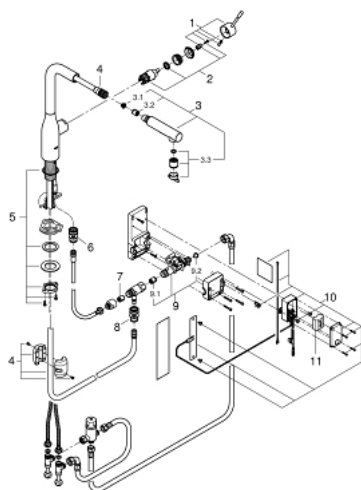


### PRODUCT DESCRIPTION

- L-spout
- Foot control: activation of water via contact with sensor
- battery supply 6 V lithium-battery, type CR-P2
- CE approved
- solenoid valve
- fixing value
- safety stop after 60 sec.(factory set)
- type of protection IP 44
- GROHE Long-Life finish
- GROHE SilkMove 28 mm ceramic cartridge
- flow strainer
- pull-out dual spray - switching between regular flow and spray
- diverter: laminar spray/SpeedClean shower jet
- automatic return to laminar spray
- swivel tubular spout
- swivel area 360°
- protected against backflow
- flexible connection hoses
- rapid installation system



## 30 311 000 ESSENCE FOOT CONTROL ELECTRONIC SINGLE-LEVER SINK MIXER 1/2"



### SPARE PARTS

- 1: Lever (Spare part-nr. 46927000)
- 2: Cartridge (Spare part-nr. 46580000)
- 3: Hand shower (Spare part-nr. 46926000)
- 3.1: Dirt strainer (Spare part-nr. 0676800M)
- 3.2: Non-return valve (Spare part-nr. 08565000)
- 3.3: Flow straightener (Spare part-nr. 48275000)
- 4: Hose for sink mixer with pull-out dual spray or mousseur (Spare part-nr. 48293000)
- 5: Shank fastening assembly (Spare part-nr. 48384000)
- 7: Non-return valve (Spare part-nr. 08565000)
- 8: Quick coupling (Spare part-nr. 46338000)
- 9: Solenoid valve (Spare part-nr. 48213000)
- 9.1: Non-return valve (Spare part-nr. 08565000)
- 9.2: Dirt strainer (Spare part-nr. 42395000)
- 10: Control unit (Spare part-nr. 48304000)
- 11: Battery (Spare part-nr. 42886000)