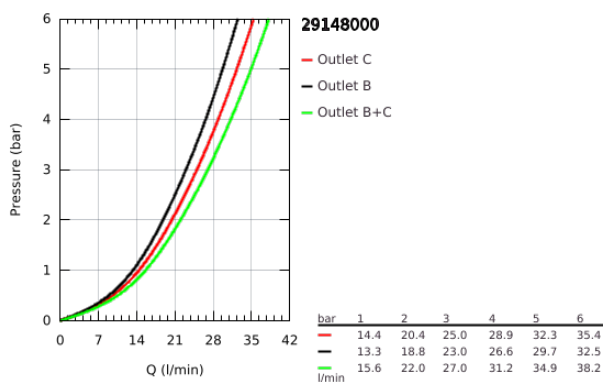
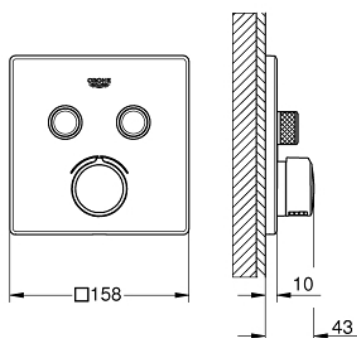


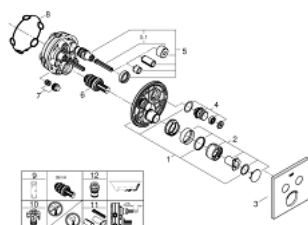
29 148 000 SMARTCONTROL CONCEALED MIXER WITH 2 VALVES

PRODUCT DESCRIPTION

- final installation for
- GROHE Rapido SmartBox (35 604)
- GROHE FastFixation metal wall escutcheon, retroactively 6° adjustable
- GROHE Long-Life finish
- GROHE SmartControl push for ON-OFF, turn for volume adjustment from GROHE Water Saving to Full Flow
- exchangeable symbols
- cartridge for temperature mixing
- multiple outlets can be run simultaneously
- outlet B = 23 l/min, outlet C = 25 l/min, outlet B+C = 27 l/min



29 148 000 SMARTCONTROL CONCEALED MIXER WITH 2 VALVES



SPARE PARTS

- 1: Mounting plate (Spare part-nr. 48363000)
 - 2: Handle (Spare part-nr. 46990000)
 - 3: Escutcheon (Spare part-nr. 46995000)
 - 4: Push button (Spare part-nr. 48361000)
 - 4.1: pushbutton (Spare part-nr. 14077000)
 - 5: Cartridge (Spare part-nr. 48359000)
 - 5.1: Spindle (Spare part-nr. 49088000)
 - 6: Cartridge (Spare part-nr. 46989000)
 - 7: Non-return valves (Spare part-nr. 47979000)
 - 8: Seal (Spare part-nr. 48360000)
 - 9: Socket Spanner (Spare part-nr. 49059000)*
 - 10: Service stops (Spare part-nr. 1405300M)*
 - 11: Universal extension set single-lever mixers, 25 mm (Spare part-nr. 14048000)*
 - 12: Backflow protection combination (Spare part-nr. 14055000)*
- * Optional accessories