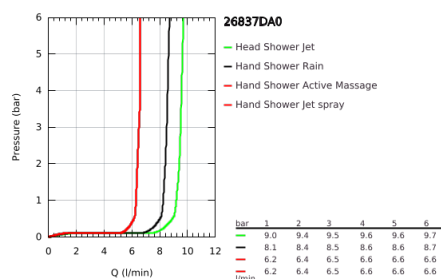
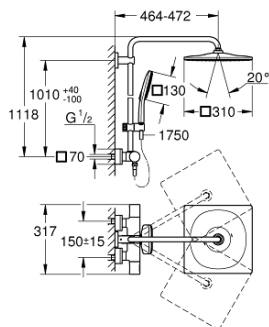
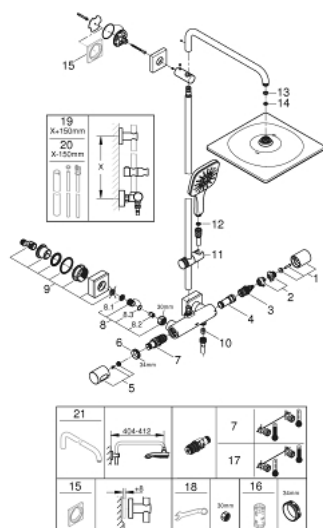


26 837 DA0 RAINSHOWER SMARTACTIVE 310 CUBE SHOWER SYSTEM WITH SAFETY MIXER FOR WALL MOUNTING



PRODUCT DESCRIPTION

- consisting of:
- horizontal swivable 450 mm shower arm
- exposed Safety Mixer with Aquadimmer function
- allows change between:
- head shower Rainshower Mono 310 Cube
- with ball joint
- rotation angle $\pm 15^\circ$
- hand shower Rainshower SmartActive 130 Cube
- adjustable in height with gliding element
- including performance grip
- Silverflex shower hose 1750 mm
- GROHE Water Saving 9.5 l/min flow limiter
- GROHE TurboStat compact cartridge
- GROHE SafeStop safety button at 38°C
- GROHE SafeStop Plus optional temperature limiter at 43°C included
- GROHE CoolTouch no risk of scalding
- GROHE DreamSpray perfect spray pattern
- GROHE One-Click Showering spray selection with one click
- GROHE Long-Life finish
- GROHE FastFixation upper bracket adjustable
- SpeedClean anti-lime system
- suitable for instantaneous heaters from 18 kW/h
- minimum flow rate 5 l/min.
- DR-brass



* Optional accessories