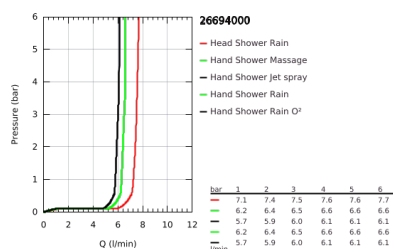


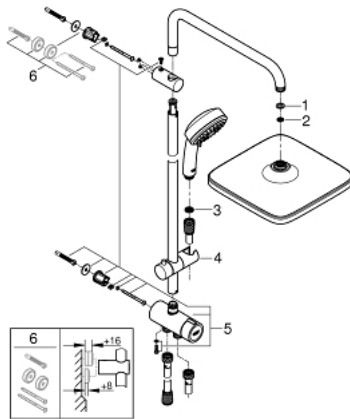
26 694 000 TEMPESTA COSMOPOLITAN SYSTEM 250 CUBE SHOWER SYSTEM WITH DIVERTER FOR WALL MOUNTING



PRODUCT DESCRIPTION

- consisting of:
- horizontal 390 mm shower arm, adjustable before installation
- change by diverter between hand shower, head shower or head shower Eco setting
- head shower Tempesta 250 Cube (26 685)
- 2 spray patterns (via diverter):
- Rain, SmartRain
- head shower with white rear cover
- with ball joint
- rotation angle $\pm 10^\circ$
- GROHE Water Saving 9.5 l/min flow limiter
- hand shower Tempesta Cosmopolitan 100 (27 575)
- 4 spray patterns:
- GROHE Rain O2, Rain, Massage, Jet
- GROHE Water Saving 9.5 l/min flow limiter
- adjustable in height with gliding element
- distance between diverter and upper bracket: 920 mm
- Relaxaflex shower hose 1500 mm 1/2" x 1/2"
- Relaxaflex shower hose 500 mm 1/2" x 1/2"
- flexible installation: connection to faucet / wall union for water supply with 1/2" thread of the 500 mm shower hose
- GROHE Water Saving - Less water, perfect flow
- GROHE DreamSpray perfect spray pattern
- GROHE Long-Life finish
- SpeedClean anti-lime system
- Inner WaterGuide for a longer life
- suitable for instantaneous heaters from 18 kW/h
- minimum flow rate 7 l/min.
- minimum pressure 1.0 bar
- professional edition

26 694 000 TEMPESTA COSMOPOLITAN SYSTEM 250 CUBE SHOWER SYSTEM WITH DIVERTER FOR WALL MOUNTING



SPARE PARTS

- 1: Fibre seal dia. Ø18.5 x Ø12 x 2 (Spare part-nr. 0138900M)
- 2: Dirt strainer (Spare part-nr. 48007000)
- 3: Dirt strainer (Spare part-nr. 0700200M)
- 4: Glider (Spare part-nr. 12140000)
- 5: Diverter (Spare part-nr. 48338000)
- 6: Compensation disc (Spare part-nr. 26496000)*
- * Optional accessories