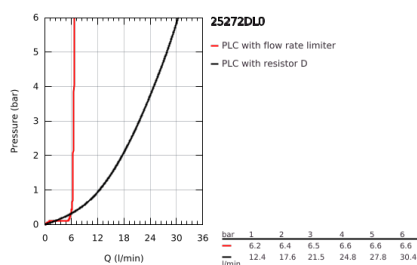
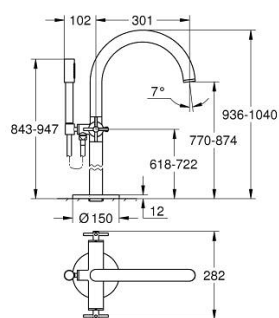


25 272 DL0 ATRIO BATH MIXER 1/2"



PRODUCT DESCRIPTION (1/2)

- floor-mounted installation
- final installation for
- 45 984
- ceramic headparts 1/2", 90°
- GROHE Long-Life finish
- automatic diverter: bath/shower
- spout with mousseur
- projection 301 mm
- integrated non-return valve in shower outlet
- hand shower Rainshower Aqua Stick (26 866)
- with shower holder
- Silverflex shower hose 1.250 mm (28 362)
- protected against backflow
- with cross handles
- without roughing-in set 45 984 (please order separately)

Pure Freude
an Wasser

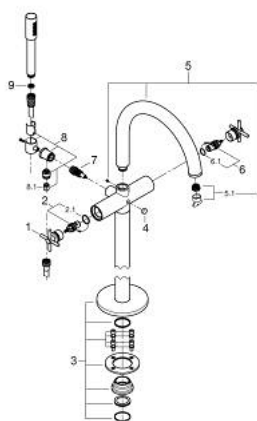


25 272 DL0 **ATRIO BATH MIXER 1/2"**

PRODUCT DESCRIPTION (2/2)

- Sets of caps with "H" and "C" marking and without marking

25 272 DL0 ATRIO BATH MIXER 1/2"



SPARE PARTS

- 1: pair of handles (Spare part-nr. 48406DL0)
- 2: Ceramic headpart, 1/2" (Spare part-nr. 45883000)
- 2.1: O-ring Ø18,2 x Ø1,7 (Spare part-nr. 0392400M)
- 3: Mounting set (Spare part-nr. 101341DL00)
- 4: Diverter knob (Spare part-nr. 64989DL0)
- 5: Outlet (Spare part-nr. 101320DL00)
- 5.1: Mousseur (Spare part-nr. 13926000)
- 6: Ceramic headpart, 1/2" (Spare part-nr. 45882000)
- 6.1: O-ring Ø18,2 x Ø1,7 (Spare part-nr. 0392400M)
- 7: Diverter (Spare part-nr. 48407DL0)
- 8: Handshower holder (Spare part-nr. 101321DL00)
- 8.1: Non-return valve (Spare part-nr. 08565000)
- 9: Dirt strainer (Spare part-nr. 0700200M)