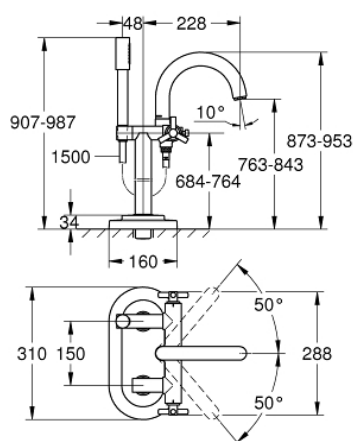


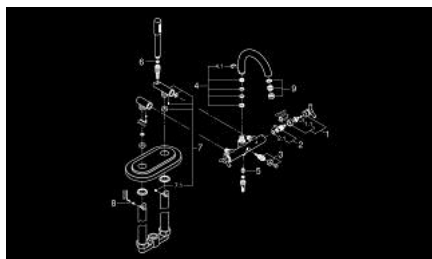
25 044 000 **ATRIO BATH MIXER 1/2"**



PRODUCT DESCRIPTION

- floor-mounted installation
- ceramic headparts 1/2", 90°
- GROHE Long-Life finish
- automatic diverter: bath/shower
- swivel tubular spout with mousseur and stop limiter
- projection 228 mm
- integrated non-return valve in shower outlet
- Sena hand shower
- with shower holder
- shower hose 1500 mm
- protected against backflow
- to be used with
- 45 473
- without roughing-in-set
- with Ypsilon handle

25 044 000 **ATRIO BATH MIXER 1/2"**



SPARE PARTS

- 1: Handle Atrio Ypsilon (Spare part-nr. 45603000)
- 1.1: Replacement handle connection kit (Spare part-nr. 45605000)
- 2: Ceramic headpart, 1/2" (Spare part-nr. 45882000)
- 2.1: O-ring Ø18,2 x Ø1,7 (Spare part-nr. 0392400M)
- 3: Diverter (Spare part-nr. 45592000)
- 4: Spout connection set (Spare part-nr. 45474000)
- 4.1: Safety disc (Spare part-nr. 0585000M)
- 5: Non-return valve (Spare part-nr. 08565000)
- 6: Dirt strainer (Spare part-nr. 0700200M)
- 7: Shower holder (Spare part-nr. 45861000)
- 7.1: Thread pin (Spare part-nr. 0311700M)
- 8: Thread pin (Spare part-nr. 0311700M)
- 9: Mousseur (Spare part-nr. 13939000)