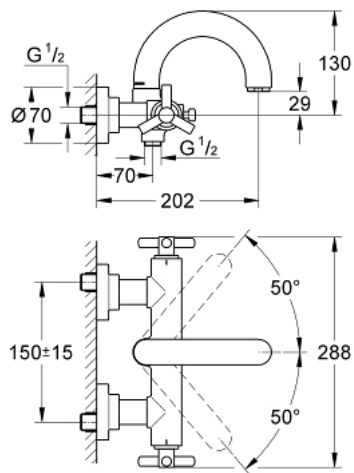


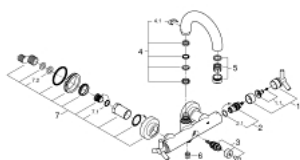
25 010 000 **ATRIO BATH MIXER 1/2"**



PRODUCT DESCRIPTION

- wall mounted
- ceramic headparts 1/2", 90°
- GROHE Long-Life finish
- automatic diverter: bath/shower
- swivel tubular spout
- mousseur
- integrated non-return valve in shower outlet
- covered S-unions
- protected against backflow
- without shower set
- with Ypsilon handle

25 010 000 **ATRIO BATH MIXER 1/2"**



SPARE PARTS

- 1: Handle Atrio Ypsilon (Spare part-nr. 45603000)
- 1.1: Replacement handle connection kit (Spare part-nr. 45605000)
- 2: Ceramic headpart, 1/2" (Spare part-nr. 45882000)
- 2.1: O-ring Ø18,2 x Ø1,7 (Spare part-nr. 0392400M)
- 3: Diverter (Spare part-nr. 45592000)
- 4: Spout connection set (Spare part-nr. 45474000)
- 4.1: Safety disc (Spare part-nr. 0585000M)
- 5: Mousseur (Spare part-nr. 13927000)
- 6: Non-return valve (Spare part-nr. 08565000)
- 7: Screw connection (Spare part-nr. 45631000)
- 7.1: O-ring Ø17 x Ø2 (Spare part-nr. 0305500M)
- 7.2: Seal (Spare part-nr. 0138600M)