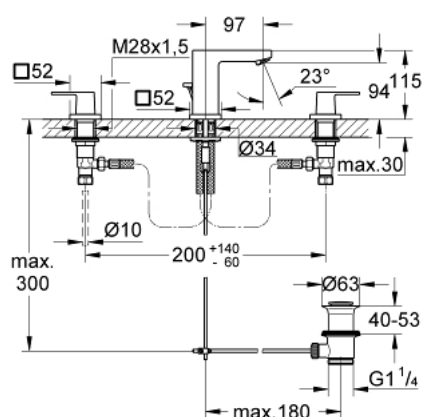
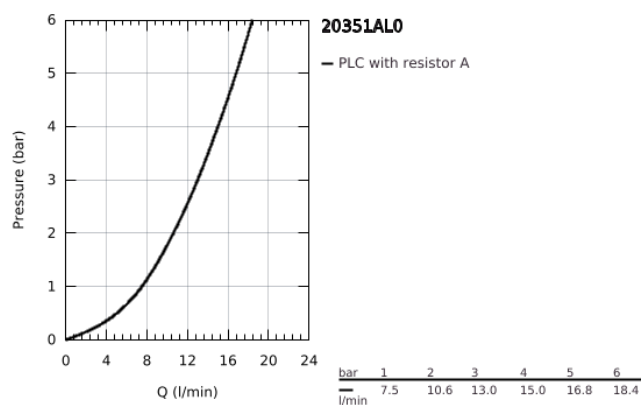


- ceramic headparts 1/2", 90°
- GROHE Long-Life finish

- GROHE FastFixation Plus installation system



- spout with mousseur
- pop-up waste set 1 1/4"
- flexible connection hoses between spout and side valves



## 20 351 AL0 EUROCUBE THREE-HOLE BASIN MIXER 1/2" S-SIZE



### SPARE PARTS

- 1: Handle pair (Spare part-nr. 48321AL0)
  - 2: Ceramic headpart, 1/2" (Spare part-nr. 45882000)
  - 2.1: O-ring Ø18,2 x Ø1,7 (Spare part-nr. 0392400M)
  - 3: Ceramic headpart, 1/2" (Spare part-nr. 45883000)
  - 3.1: O-ring Ø18,2 x Ø1,7 (Spare part-nr. 0392400M)
  - 4: Coupling nut 1/2" (Spare part-nr. 1290100M)
  - 4.1: Fibre seal dia. Ø18.5 x Ø12 x 2 (Spare part-nr. 0138900M)
  - 5: Mousseur (Spare part-nr. 13929AL0)
  - 6: Pop-up rod (Spare part-nr. 46787AL0)
  - 7: Escutcheon (Spare part-nr. 48421AL0)
  - 8: Shank mounting kit (Spare part-nr. 46671000)
  - 9: Waste set 1 1/4" (Spare part-nr. 28910AL0)
  - 9.1: Plug (Spare part-nr. 07182AL0)
  - 9.2: Eccentric rod (Spare part-nr. 07052000)
  - 10: Coupling nut 1/2" x 14.5 mm (Spare part-nr. 1290200M)\*
  - 11: Mounting wrench (Spare part-nr. 19017000)\*
  - 12: Eccentric rod (Spare part-nr. 07341000)\*
- \* Optional accessories