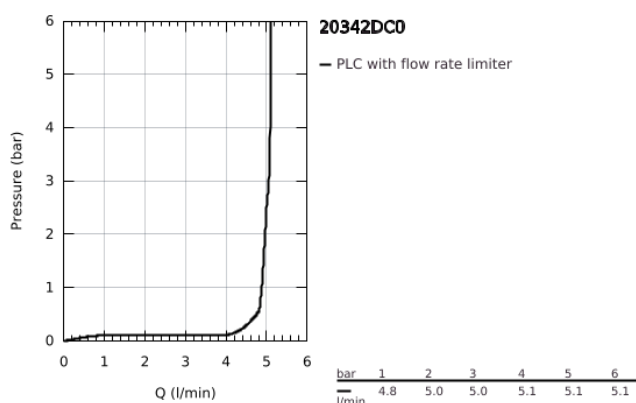
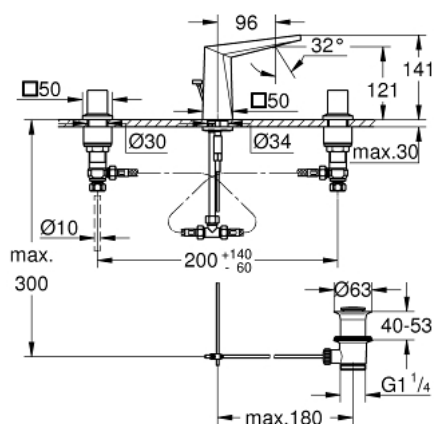


## 20 342 DC0 ALLURE BRILLIANT THREE-HOLE BASIN MIXER 1/2" S-SIZE

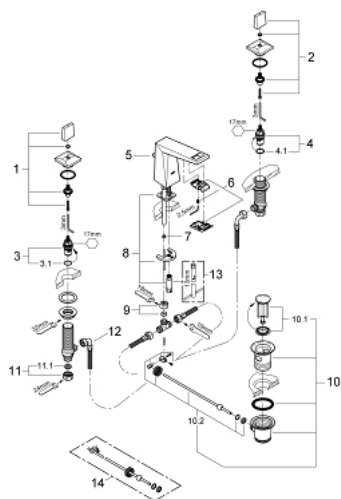


### PRODUCT DESCRIPTION

- ceramic headparts 1/2", 90°
- GROHE Long-Life finish
- GROHE Water Saving 5.0 l/min. flow limiter
- low spout with integrated mousseur
- pop-up waste set 1 1/4"
- flexible connection hoses between spout and side valves



## 20 342 DC0 **ALLURE BRILLIANT THREE-HOLE BASIN MIXER 1/2" S-SIZE**



### SPARE PARTS

- 2: Handle pair (Spare part-nr. 48320DC0)
- 3: Ceramic headpart, 1/2" (Spare part-nr. 45882000)
- 3.1: O-ring Ø18,2 x Ø1,7 (Spare part-nr. 0392400M)
- 4: Ceramic headpart, 1/2" (Spare part-nr. 45883000)
- 4.1: O-ring Ø18,2 x Ø1,7 (Spare part-nr. 0392400M)
- 5: Pop-up rod (Spare part-nr. 46787DC0)
- 6: Race (Spare part-nr. 46794DC0)
- 7: Flow limiter (Spare part-nr. 48160000)
- 8: Shank mounting kit (Spare part-nr. 46671000)
- 9: Compression union 3/8" (Spare part-nr. 12914000)
- 10: Waste set 1 1/4" (Spare part-nr. 28910DC0)
- 10.1: Plug (Spare part-nr. 07182DC0)
- 10.2: Eccentric rod (Spare part-nr. 07052000)
- 11: Coupling nut 1/2" (Spare part-nr. 1290100M)
- 11.1: Fibre seal dia. Ø18.5 x Ø12 x 2 (Spare part-nr. 0138900M)
- 12: Flexible connection hose (Spare part-nr. 45704000)
- 13: Mounting wrench (Spare part-nr. 19017000)\*
- 14: Eccentric rod (Spare part-nr. 07341000)\*

\* Optional accessories