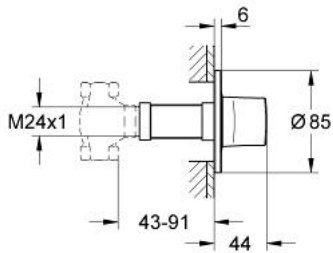


## 19 444 000 **CONCEALED VALVE EXPOSED PART**



### PRODUCT DESCRIPTION

- final installation for
- 29 032 or 35028 Rapido C
- 35 028 000
- without concealed body
- installation depth infinitely adjustable 43 - 91 mm
- bayonet union escutcheon



## 19 444 000 **CONCEALED VALVE EXPOSED PART**



### **SPARE PARTS**

1: Handle (Spare part-nr. 45985000)

2: Extension for spindle (Spare part-nr. 45988000)