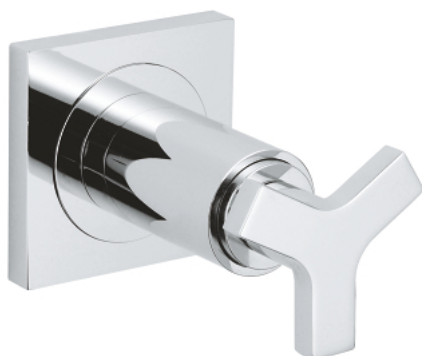
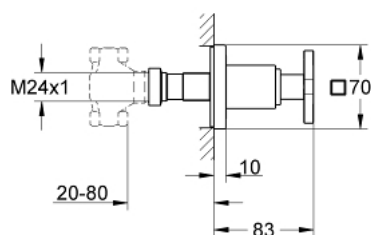


## 19 334 000 **ALLURE CONCEALED VALVE EXPOSED PART**

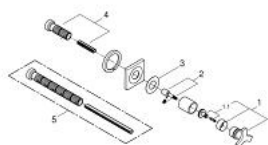


### PRODUCT DESCRIPTION

- final installation for
- 35 028 000
- for concealed valves 29 800 1/2", 29 802 3/4", 29 805 1"
- installation depth infinitely adjustable 20-80 mm
- escutcheon with screwable wall sealing
- without concealed body
- GROHE Long-Life finish



## 19 334 000 **ALLURE CONCEALED VALVE EXPOSED PART**



### **SPARE PARTS**

- 1: Handle (Spare part-nr. 46611000)
- 1.1: Replacement handle connection kit (Spare part-nr. 45605000)
- 2: Extension for spindle (Spare part-nr. 45607000)
- 3: Sealing washer (Spare part-nr. 48046000)
- 4: Extension-set, 80 mm (Spare part-nr. 45202000)
- 5: Extension-set 200 mm (Spare part-nr. 45203000)\*

\* Optional accessories